

Combined pickup station for bagged products and big bags

**Reliable discharge
into enclosed
system**

**Big bags
are useful with
small throughput.**

**Also available with
an auxiliary
vibration or flexing
device**

Preferred applications

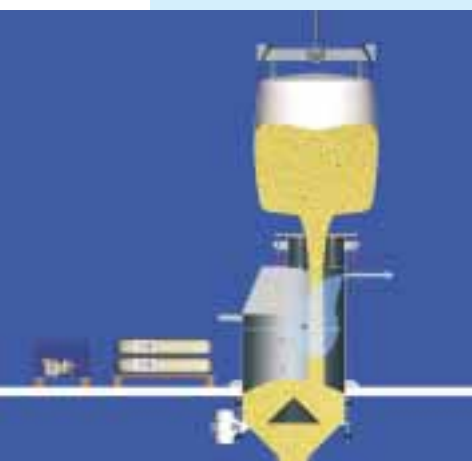
For ergonomic loading of bagged materials and big bags into enclosed, automated feeding systems. Especially flexible because sacks as well as big bags can be loaded.

Special advantages

- Reliable discharge of bulk materials from sacks and big bags into enclosed production systems.
- Big bags are useful as an eco-friendly means of transportation and packaging even with small throughput.
- For flow resistant bulk materials, the combined station is equipped with an auxiliary vibration or flexing device.

- Individual adaptation to the following systems.
- A textile insert winding device is available as an optional extra.

THE INNOVATION



Loading from big bags

The big bags are hung on mobile hoists and taken to the combined pickup station where the outlet of the big bag is put over the inlet pipe and clamped down by manually or pneumatically lowering the pressure disc. Then the tie-up string is opened and discharge begins.

Alternatively, the big bag can be put on a loading table and connected as described above.

The discharge without residue into the downstream process can start. For bulk products, difficult to discharge the big bag supporting table is equipped with an additional vibration unit or massager. If requested the big bag discharge stations can also be equipped with a low level indication in order to make a timely big bag change possible.

Loading from sacks

The vacuum extraction is started by opening the cover of the sack tipping hopper. The sack is opened and the product is discharged into the hopper. The dust is extracted and collected in an appropriately dimensioned filter.

Big bag connecting system type BBA ___ F



After connecting the big bag, it is lifted a little by means of the hoist to tighten the outlet.

Big bag connecting system type BBA ___ A

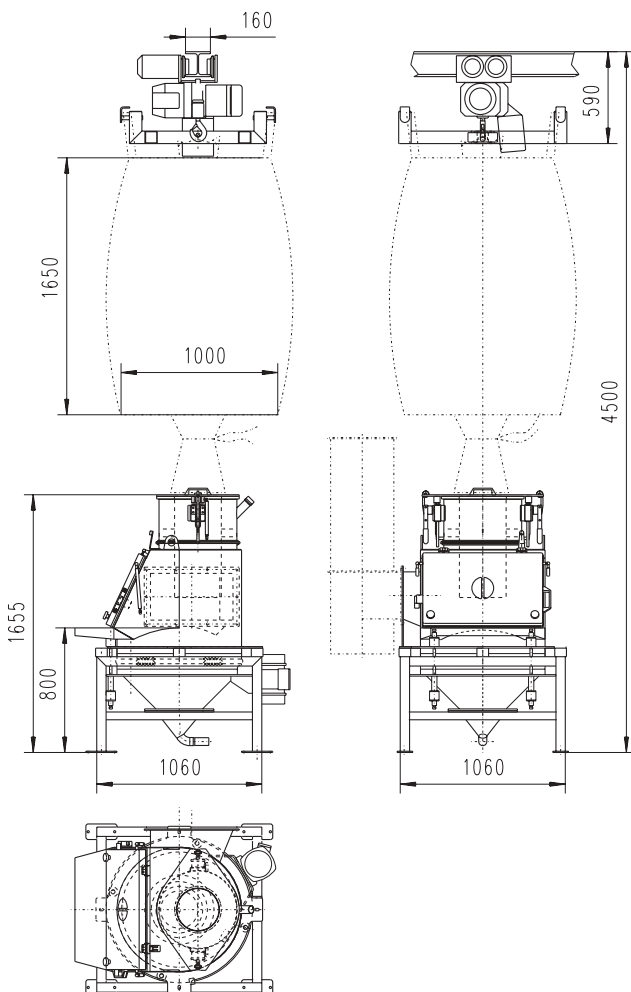


The outlet of the big bag is tightened by lowering the connecting system.

Technical data

| | |
|-----------------------------|--|
| Suitable for: | Commonly used big bags with discharge pipe |
| Compressed air consumption: | 8.3 l per stroke p = 6 bar |
| Design: | Frame: epoxy-coated mild steel, alternatively: nickel chromium steel 1.4301, Parts coming into contact with product: nickel chromium steel 1.4301, Surface: choice from A2-1 to A2-4 |
| Weight: | 270 kg |
| Protection type: | IP 54 |
| Rated voltage: | 400V/50Hz |
| Control voltage: | 24 V |

Big bag pickup, view from above – centralized vacuum system



Big bag pickup, lateral view, filter installed

