

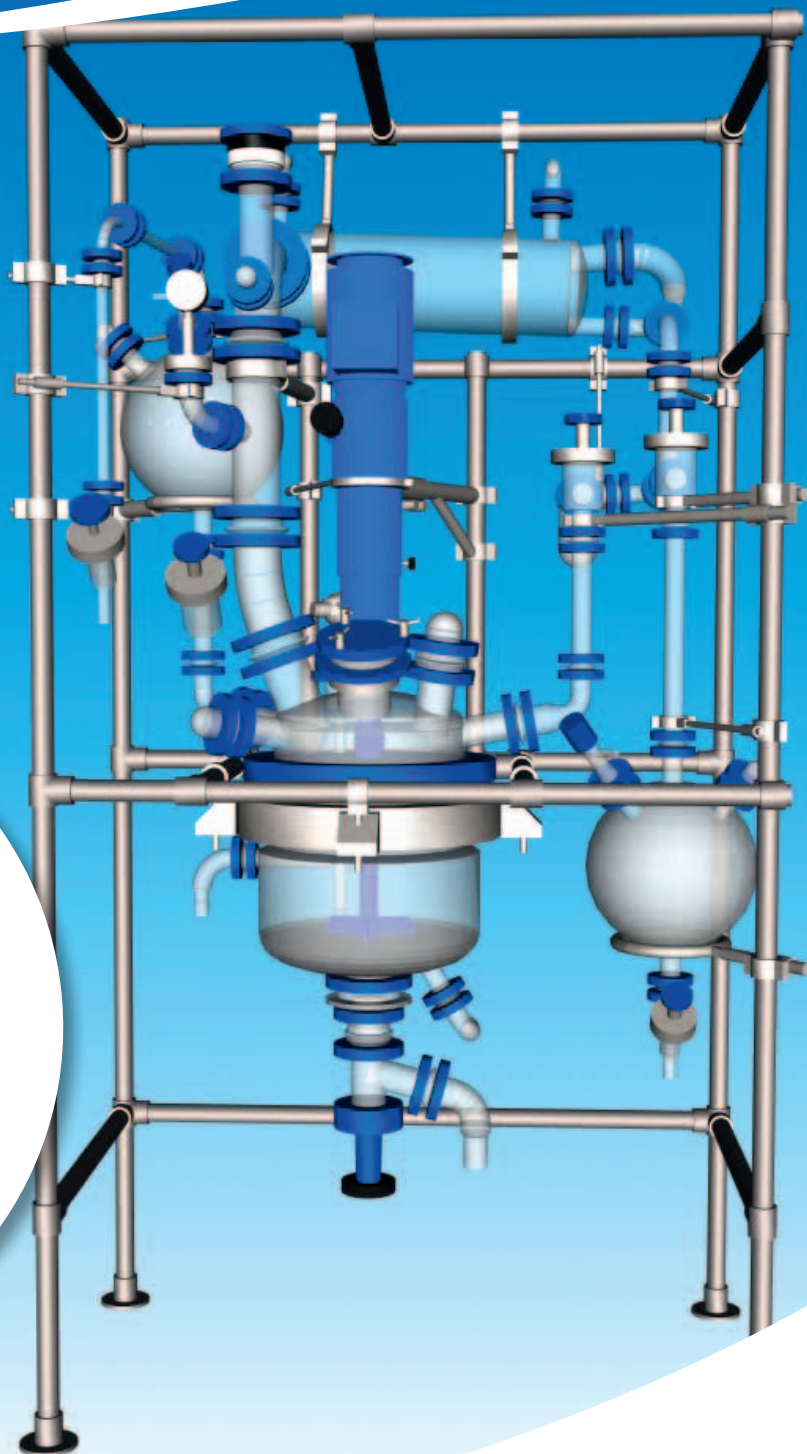
BR – Type chemReactor BR15 – BR101

The economic Büchi pilot plant reactor version

- compact
- economic
- simple
- safe

Specs:

- Standardized setups
- 15 – 100 liter jacketed full glass reactors
- -60°C to $+200^{\circ}\text{C}$
- -1 bar (FV) to $+0.5\text{ bar}$
- Efficient mixing with powerful stirrer drive
- Glass lined stirrer
- Glass overhead with «büchiflex» components
- Built for Ex classified areas (ATEX)
- c-GMP design
- Stainless steel 316 scaffolding



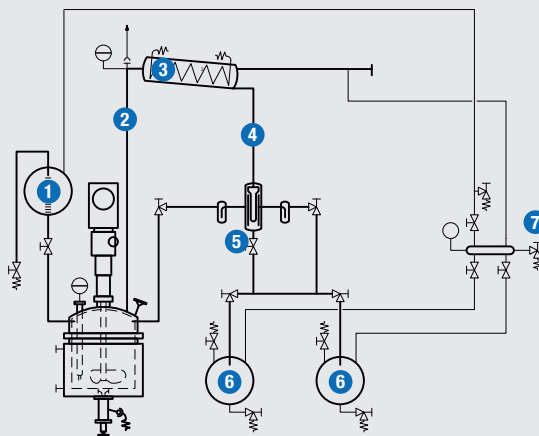
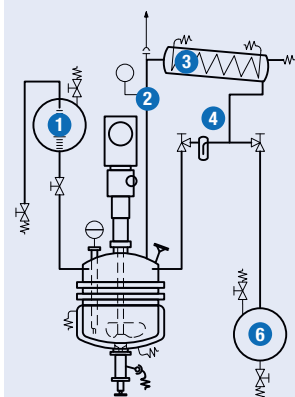
Büchi chemReactors – Complete range of pilot plant reactor systems

	BR series	GR series	CR series
visibility	+++	+++	++
stability	++	++	+++
heat transfer	+	+	+++
multipurpose reactor	+	++	+++

Performance: BR series → GR series → CR series

Büchi chemReactors	BR15 - 101	GR15 - 101	CR15- 252
Reactor volume	15 – 100 liters	15 – 100 liters	15 – 250 liters
Comparison: 15 liter setup			
Size WxDxH	1220 x 700 x 2190mm	1680 x 955 x 2190mm	1680 x 955 x 2190mm
Reactor bottom section	Full glass	Full glass	Glass lined steel
Reactor cover	Glass / Glass lined steel	Glass / Glass lined steel	Glass / Glass lined steel
Stirrer	Glass lined steel	Glass lined steel	Glass lined steel
Baffle / Pt100 in reactor	Glass	Glass	Glass lined steel
Pt100 in vapor head	No	Yes	Yes
Phase separator	No	Yes	Yes
Feeder / receiver	1	1 / 2	1 / 2
Vacuum manifold	No	Yes	Yes
Operating temperature	-60°...+200°C	-60°...+200°C	-60°...+200°C -80°...+200°C (option)

- 1 Feeder
- 2 Vapor duct
- 3 Condenser
- 4 Condensate piping
- 5 Phase separator
- 6 Receiver
- 7 Vacuum distributor



«büchiflex»

«büchiflex» - the unique flexible and modular glass system using standardized components allows for absolutely stress-free installation and makes it possible to assemble piping on a gradient without the need for any special compensators.

«büchiflex» glass connections are

- clean
- safe
- reliable

