

LABORATORY SINGLE-USE SYSTEMS

The indispensable bench tools for a successful scale-up



DrM

www.drm.ch

Lab Systems



This is DrM

Customized solutions

Each solid-liquid separation system is tailor made to the specific application parameters of our clients. We view every application as a challenge to satisfy our clients, regardless if the application is straight forward or complex.

Application comprehension

Every solid-liquid separation application is unique. DrM's comprehension of all of the applications begins with a discussion with the client and is followed by a request that the client complete an application questionnaire to the best of its ability. Following a review of the information submitted by the client, DrM application specialists may suggest that on-site testing and/or piloting be carried out. This hands-on work ultimately gives both DrM and its clients the confidence that the process is scalable. It also puts DrM in a position to submit a technical/commercial proposal that it will stand behind.

Quality above all

DrM's Quality System is ISO 9001 certified for the design and manufacture plants. We are dedicated to continually improving the efficiency and the effectiveness of our quality management system. All of our products follow a rigid quality control program that employs the most current testing and inspection methods prior to shipment.



TSD FEED PUMP STAINLESS STEEL

850158.04

For optimal feeding of TSD filters, DrM offers air-driven double diaphragm pumps in both stainless steel and PVDF.

Material body	SS 316L
Material membrane	PTFE
Max. Feed Flow (lt/min)	18.9
Max. Pressure (barg)	8.5
Lt/Stroke	0.02
Temperature (°C)	-25/+105
Accessories	Pulsation dampener, pressure regulator, mounting platform



TSD PVDF FEED PUMP

850158.31

For optimal feeding of TSD filters, DrM offers air-driven double diaphragm pumps in both stainless steel and PVDF.

Material body	PVDF
Material membrane	PTFE
Max. Feed Flow (lt/min)	18.9
Max. Pressure (barg)	8.5
Lt/Stroke	0.02
Temperature (°C)	-25/+105
Accessories	Pulsation dampener, pressure regulator, mounting platform



PERISTALTIC PUMP

Execution	Stand-alone, integrated user panel with display
Product contact parts	Santoprene / SEBS
Max. Flow (L / min)	2
Max. Pressure (barg)	7
Max. Temperature (°C)	45
Power supply (V AC)	100-240
Note	<ol style="list-style-type: none"> 1. Manual, analog and digital input and output functionality 2. Tri clamp or hose barb fittings available 3. Other peristaltic pump types, materials and compliance on request



LEVITRONIX PUMP

Pump & Flow control arrangement consisting of:

Kit includes	<p>2 pumps for 0.01 - 3 L/min. at 0.1 - 5 bar (in serial installation), max. 19'000 rpm, wetted parts PTFE, 1 In-line Ultrasonic flow meter 0 - 0.8 or 0 - 8.0 L/min., wetted parts PP, max. operating temperature 60°C, clamp on sensors available on request, control system with 7" color touch screen, connections for one flow and 3 pressure sensors</p>
--------------	--



EXTENSION KIT FOR STAINLESS STEEL TSD FILTER

850157.88

This option allows the installation of a longer TSD candle (212 mm, included in the kit) and doubles the filter area to 0.024 m².

Kit includes

- 10 pcs. Various cloths of extended length
- 1 FKM o-ring gasket
- 1 Vessel tri clamp
- 1 FKM profile gasket
- 1 PTFE profile gasket



EXTENSION KIT FOR GLASS TSD FILTER

850157.68

This option features a borosilicate glass vessel extension with SS 316L connections, allowing a direct view of the filtration process.

Kit includes

- 1 candle extension
- 1 vessel tri clamp
- 1 splinter protection
- 1 FKM profile gasket
- 1 PTFE profile gasket
- 1 Stand extension

Max. Pressure (barg)

6

Max. Temperature (°C)

150

Filling Volume (lt)

1.35

Length / Diameter (mm)

300 / 80

Weight (kg)

~5.6



AUXILIARY KIT FOR STAINLESS STEEL TSD FILTER

850223.00

Kit includes

- Various filter cloths
- Seal tape (Teflon)
- Clamps
- Pincer
- Gasket
- O-ring (Silicon/FEP)
- Various spanners
- Hexagonal screw wrench



AUXILIARY KIT FOR PVDF TSD FILTER

850224.00

Kit includes

- Various filter cloths
- Seal tape (Teflon)
- Clamp
- Pincer
- Screw joint-pneumatic
- Sealing section TSD PVDF
- O-ring (Silicon/FEP)
- Clamping ring
- Cable tie



AUXILIARY KIT FOR FOR STAINLESS STEEL XL TSD FILTER

850279.00

Kit includes

- Seal tape (Teflon)
- Clamp
- Pincer
- Screw joint-pneumatic
- O-ring (Silicon/FEP)
- Various spanners
- Filter cloths according to application



FUNDAMIX® SU 1L

Drive unit	1
Plate dia. (mm)	65
Mixing volume (lt)	1



FUNDAMIX® SU 10L

Drive unit	1
Plate dia. (mm)	65
Mixing volume (lt)	10



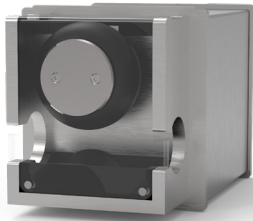
FUNDAMIX® SU 25L

Drive unit	1
Plate dia. (mm)	65
Mixing volume (lt)	25



FUNDAMIX® SU 100L

Drive unit	2
Plate dia. (mm)	145
Mixing volume (lt)	100



SU PINCH VALVE		896200.00
Type	Pinch, non-invasive	
Model	SU Valve	
Actuation	Electrical	
Actuation Time	Opening: 3 sec Closing: 3 sec	
Power Consumption	Idle position (closed or open): 0.1W During opening and closing (3 sec.): 5W	
Power Supply	24 VDC / 12 VDC	
Signal Input	OFF Position: 0VDC ON Position: 12...24VDC	
Material	316L / Polyethylene	
Max. Working Pressure (barg)	4	
Max. Working Temperature	80 °C	
Hose size	OD 6.35 - 25.4 mm OD 1/4" - 1"	
Electrical Connection	Power, 12VDC: 2 wires Signal, 24VDC: 2 wires	
Note	1) User interface via PLC or DCS	



FUNDASTEP CONTROLLER		895100.00 / 895200.00
Size (mm)	1) 400 x 300 x 200 2) 600 x 300 x 200	
Stainless steel cabinet with TP includes	1 PLC 3 Power supplies 6 SU pinch valves 3 Solenoid valves (3/2-way) 2 Air filter regulator 1 Emergency Stop	
Options	Max. 3 Pressure sensors 1 Flow sensor	
Power Supply	100...230 VAC (12/24 VDC)	
Power Supply Connector	IEC 60320 C13 IEC 320 C13	
Electrical Connector	Circular connectors with protective cap	
Pneumatic Connector	4 Push-in connector for tubing diam. 6 mm	
Touch Panel Operating Modes:	1) Fully automatic loop filtration: The filtration cycle restarts automatically after reaching the end of the sequence 2) Automatic single pass filtration: The filtration cycle stops after reaching the end of the filtration 3) Step-by-step: The operator steps through the sequence manually 4) Manual: The operator opens and closes each individual valve from the touch screen	
Note	1) Steps can be added/removed by the operator as required	



BACK-FLUSH TANK 1L

Includes	1 SU Back-flush bag 1 Housing 1 Tri clamp 1 Tri clamp gasket
Bag volume (lt)	1
Note	Other specification based on FUNDABAC® Single-Use Filter



PERISTALTIC PUMP

Execution	Stand-alone, integrated user panel with display
Product Contact Parts	Santoprene / SEBS
Max. Flow (lt / min)	2
Max. Pressure (barg)	7
Max. Temperature (°C)	45
Power Supply (V AC)	100-240
Note	1) Manual, analog and digital input and output functionality 2) Tri clamp or hose barb fittings available 3) Other peristaltic pump types, materials and compliance on request



CENTRIFUGAL PUMP

896500.00

Execution	Stand-alone, integrated user panel with display
Product Contact Parts	Polypropylene
Max. Flow (lt / min)	17
Max. Pressure (barg)	2
Max. Temperature (°C)	60
Power Supply (V DC)	24
Note	1) Manual and analog input 2) Tri clamp or hose barb fittings available 3) Wet material can be delivered pre sterilized by gamma irradiation 4) Wet material FDA, USP Class VI, BSE/TSE/animal free 5) Other centrifugal pump configuration and materials available on request



AIR COMPRESSOR

896700.00

Execution	Stand-alone
Max. Flow (lt / min)	37
Max. Pressure (barg)	8
Tank Volume (lt)	3.5
Power Supply (V AC)	100-240
Noise Level (dB)	30-40
Note	1) Lubricated 2) Pressure reducing valve and pressure gauges available 3) Quick pneumatic coupling connection 4) Other compressor types and oil-free on request



ASSEMBLY SET PNEUMATIC

Set Includes	3 m pneum. tubing, OD 6 mm 5 pcs. manual valve, pneumatic 1 Check valve, OD 6 mm 1 Male branch "Y", OD 6 mm 1 Male connector, 1/4", OD 6 mm 2 pcs. Male branch tee, 1/4", OD 6 mm 2 pcs. Female connector, 1/4", OD 6 mm 2 pcs. Silencer, 1/4"
--------------	---



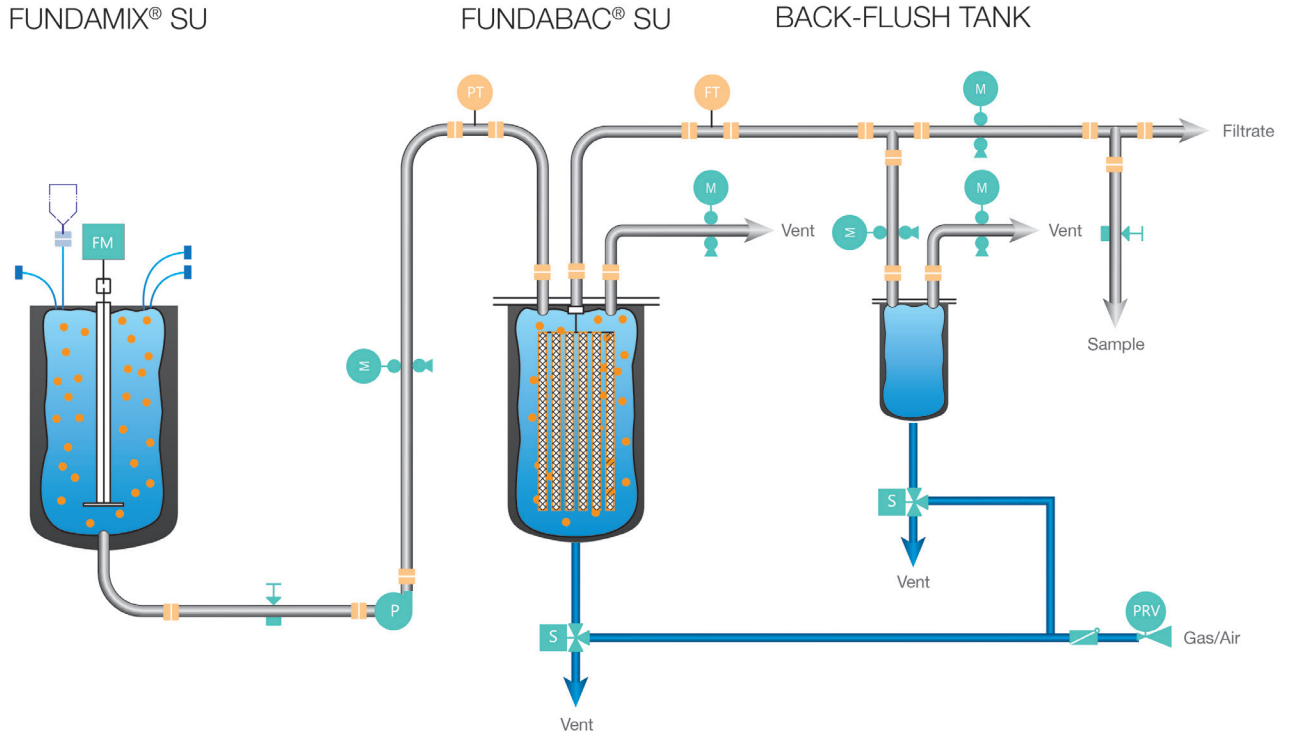
ASSEMBLY SET PROCESS

Set Includes	3 m reinforced tubing, 1/4", OD 16 mm, silicone 10 pcs. Hose barb/tri clamp adapter, 1/4" HB/25 mm TC 10 pcs. tri clamp silicone gasket 5 pcs. Clamp, quick-connect, TC 25 mm 2 pcs. Hose barb Y-connector, 1/4" 5 pcs. Manual valve, process, 1/8"- 3/4" OD tube
--------------	--

Single-Use Flowsheets

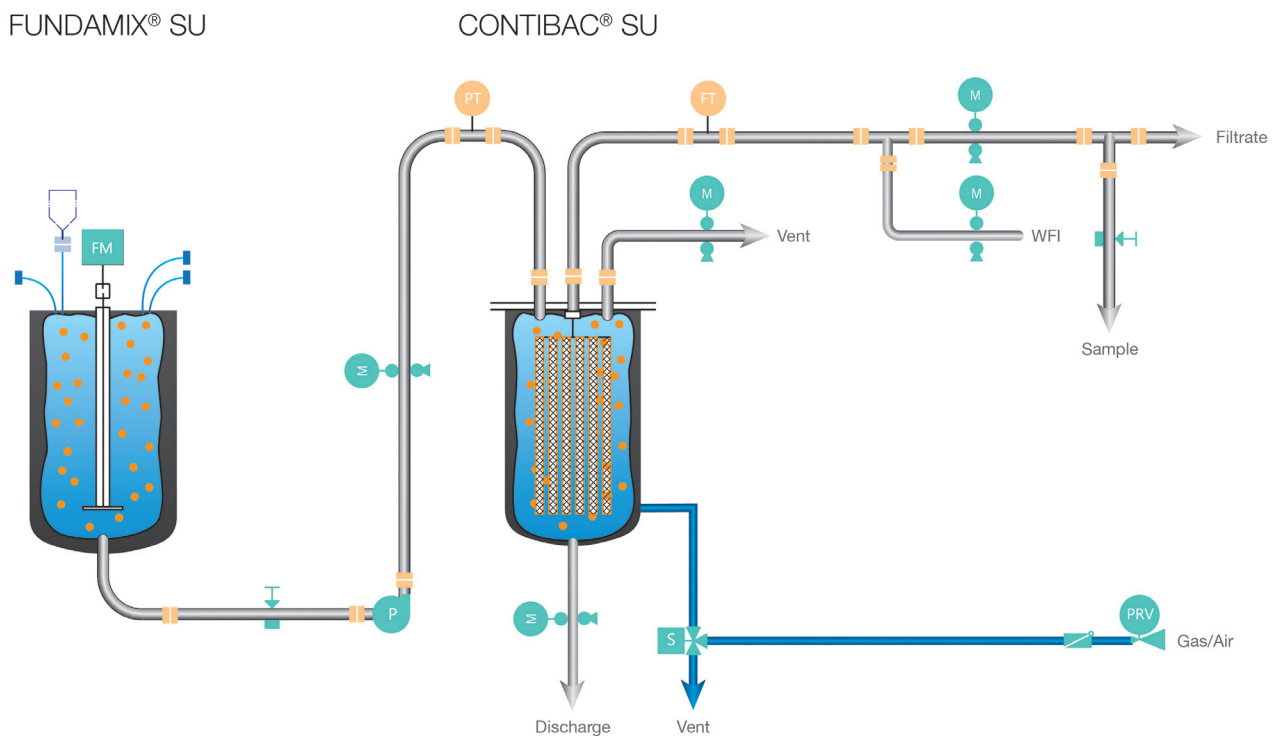
Flow Sheet 1:

Typical process flow diagram of a FUNDABAC® SU Filter and a FUNDAMIX® SU Mixer.



Flow Sheet 2:

Typical process flow diagram of a CONTIBAC® SU Filter and a FUNDAMIX® SU Mixer.



single-Use



Headquarters and Subsidiaries

Switzerland Global HQ

DrM, Dr. Mueller AG
Alte Landstrasse 415
8708 Maennedorf, Switzerland

Tel. +41 44 921 2121
Fax +41 44 921 2131

mailbox@drm.ch
www.drm.ch

China

DrM Shanghai Co., Ltd.
Building 2
No. 18 Rong Xin Road
Xinqiao, Song Jiang District
Shanghai 201612, China

Tel. +86 21 5768 7390
Fax +86 21 5768 7391

Poland

DrM Polska Sp. z o.o.
Al. Kazimierza Wielkiego 5
PL87-800
Wloclawek, Poland

Tel. +48 54 237 2921
Fax +48 54 237 2931

India

DrM Filter Technology Pvt. Ltd.
Plot 46 – 1 & 2
Hansot Road Village
Pungam, Ankleshwar
Bharuch, Gujarat,
393020, India

Tel. +91 2646 652775/6

USA

DrM, Inc.
2125 Center Ave.
Suite 507
Fort Lee NJ 07024, USA

Tel. +1 201 302 0667
Fax +1 201 302 6062

Malaysia

DrM, Dr. Mueller AG
SEA Regional Office
No. 13 Jalan SE 2B
Sunway Eastwood
Taman Equine
Seri Kembangan
43300 Selangor, Malaysia

Tel. +60 3 8940 4917
Mob. +60 17 394 056

UAE

DrM, Dr. Mueller LTD
Swiss Tower, 20th Floor
P.O. Box 392394
Dubai / United Arab Emirates

Tel. +971 505710838
Tel. +971 505710839

Germany

Klaus-Günther Brekow
Waldnielerstr. 16
47839 Krefeld
Germany

Tel: +49 2151 659 19 46
Fax: +49 2151 659 19 36
Mob: +49 1752 99 8393
Email: kbrekow@drm.ch